



STUDENT-RECOMMENDED INTERNSHIP SITES

CAREER AND TRANSFER CONNECTIONS

internship

- experience
- learning
- exposure
- practice

INTERNSHIP SITES ARE RECOMMENDED BY SIERRA COLLEGE STUDENTS THAT INTERNED AT THE ORGANIZATION IN THE PAST 4 YEARS. STUDENTS ARE ENCOURAGED TO CONFIRM THAT THE SITE AND INTERNSHIP FIT THEIR CAREER GOAL.

SIERRACOLLEGE.EDU\CTC, 916.660.7481, CTC@SIERRACOLLEGE.EDU

Interest Areas and Their Programs

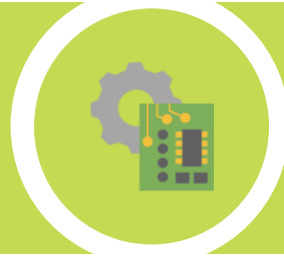
Interest Area	Program	Abbreviated Program Name	95 Available?
Applied Technologies	Advanced Manufacturing	ADVDM	No
	Automotive Technology	AUTO	Yes
	Building Industries (formerly CET)	BI	Yes
	Drafting and Engineering Support	DES	Yes
	Information Technology (formerly CIS)	IT	Yes
	Mechatronics	MECH	Yes
	Welding Technology	WELD	Yes
Business and Innovation	Business	BUS	Yes
	Economics	ECON	No
	Recreation Management	RECM	Yes
Earth and Environment	Agriculture	AGRI	Yes
	Earth Science	ESCI	Yes
	Environmental Studies and Sustainability	ESS	Yes
	Geography	GEOG	Yes
	Natural Science	N/A	No
Education	Education	EDU	Yes
	Human Development and Family	HDEV	Yes
Language and Literature	Deaf Studies	DFST	Yes
	English	ENGL	No
	Spanish	SPAN	No
	World Languages	FREN, GER, ITAL, JPN	No
People, Culture and Society	Anthropology	ANTH	No
	Art History	ARHI	No
	Communication Studies	COMM	Yes
	History	HIST	Yes
	Humanities	HUM	Yes
	Lesbian, Gay, Bisexual and Transgender Studies	LGBT	Yes
	Liberal Arts	N/A	No
	Philosophy	PHIL	No
	Political Science	POLS	Yes
	Psychology	PSYC	No
	Social Science	SSCI	No
	Sociology	SOC	Yes
Women and Gender Studies	WMST	Yes	

Interest Area	Program	Abbreviated Program Name	95 Available?
Public Safety, Health and Wellness	Administration of Justice	ADMJ	Yes
	Allied Health	ALH	No
	Fire Technology	FIRE	Yes
	Health Education	HED	No
	Health Sciences	HSCI	No
	Kinesiology	KIN	Yes
	Nursing, Registered	NRSR	No
	Nutrition and Food Science	NUTF	Yes
Science, Technology, Engineering and Math	Astronomy	ASRT	No
	Biological Sciences	BIOL	Yes
	Chemistry	CHEM	Yes
	Computer Science	CSCI	Yes
	Engineering	ENGR	Yes
	Mathematics	MATH	No
	Physics	PHYS	No
Visual and Performing Arts	Applied Art and Design	AAD	Yes
	Art	ART	Yes
	Fashion	FASH	Yes
	Music	MUS	No
	Photography	PHOT	Yes
	Theatre Arts	THEA	Yes

APPLIED TECHNOLOGIES



APPLIED TECHNOLOGIES



ADVANCED MANUFACTURING

AUTOMOTIVE TECHNOLOGY

BUILDING INDUSTRIES

DRAFTING AND ENGINEERING SUPPORT

INFORMATION TECHNOLOGY

MECHATRONICS

WELDING TECHNOLOGY

APPLIED TECHNOLOGIES RECOMMENDED INTERNSHIP SITES

Program	Site Name	City	Phone	Email	Website	Most Recent Participating Semester
AUTO	BMR/ Napa Auto Care	Roseville	(916) 560-1495		https://www.bmrnapa.com/	Summer 2016
AUTO	Jackson Motors	Jackson	(209) 223-1505			Fall 2017
AUTO	Placer County Garage	Auburn	(530) 745-7591		https://www.placer.ca.gov/1492/Public-Works	Fall 2017
AUTO	Sierra College Transportation Department	Rocklin	(916) 660-7655	facilities01@sierracollege.edu	https://www.sierracollege.edu/directory/groups/operations/facilities/transportation/index.php	Fall 2018
AUTO	Strictly Toy-Ondas	Auburn	(530) 887-0808	strictlytoyondas@ymail.com	https://www.strictlytoyondas.com/home.html	Summer 2017
AUTO	Tahoe Aquatic Center	King's Beach	(530) 546-2419	tahoeaquatic@gmail.com	https://tahoeaquaticcenter.com/	Fall 2016
AUTO	Wheels West Inc.	Rocklin	(916) 409-2337			Spring 2017
DES	Borges Architectural Group	Roseville	(916) 782-7200		https://www.borgesarch.com/	Summer 2018
DES	Burne Engineering	El Dorado Hills	(530) 672-1600	info@burneengineering.com	https://www.burneengineering.com/	Summer 2018
DES	CalTrans	Sacramento	(916) 654-2852		https://dot.ca.gov/	Fall 2017
DES	Capitol City Design	West Sacramento	(916) 375-0135	sondrag@capcitydesign.com	https://www.capcitydesign.com/	Spring 2018
DES	Jacobs	Sacramento	(916) 920-0300		http://www.jacobs.com/	Summer 2018
DES	City of Roseville	Roseville	(916) 774-5151		https://www.roseville.ca.us/	Spring 2017
DES	Cullumber Engineering	Rocklin	(916) 251-9798	Admin@CullumberEng.com	http://cullumbereng.com/	Fall 2018
DES	Drill Tech Drilling and Shoring Inc.	Antioch	(925) 978-2060	dtds@drilltechdrilling.com	https://drilltechdrilling.com/	Summer 2018
DES	GC Products Incorporated	Lincoln	(916) 645-3870		http://gcproductsinc.com/	Fall 2019
DES	Gladding McBean	Lincoln	(916) 645-3341		https://www.gladdingmcbbean.com/	Spring 2018
DES	Intel	Folsom	(916) 356-8080		https://www.intel.com/content/www/us/en/homepage.html	Summer 2019
DES	Jensen Precast	Sacramento	(916) 991-8800	info@jensenprecast.com	https://www.jensenprecast.com/City-of-Sacramento-a240/	Summer 2016
DES	Kristin McGregor-Drafting Services	Sacramento	(916) 316-4531			Spring 2018
DES	MacKay and Soms	Roseville	(916) 773-1189	roseville@msce.com	https://www.msce.com/	Summer 2018
DES	Martin Sprocket and Gear	Sacramento	(916) 441-7172		http://www.martinsprocket.com/	Summer 2016
DES	MP Stone	Sacramento	(916) 548-8232	precaststone@yahoo.com	http://www.mpstone.com/	Spring 2018
DES	Mr. Sprinkler	Roseville	(916) 773-7036		https://mrsprinkler.com/	Fall 2019
DES	MST Architects	Sacramento	(916) 567-9630		http://mstarchitects.com/	Spring 2020

Program	Site Name	City	Phone	Email	Website	Most Recent Participating Semester
DES	Northern Fire Inspection Inc.	Sacramento	(916) 457-2232	nfinspection@gmail.com	http://www.northernfireinspection.com/	Summer 2016
DES	Placer County Environmental Services	Auburn	(530) 745-2300		https://www.placer.ca.gov/3105/Environmental-Health	Fall 2016
DES	Riverside Builders	Sacramento	(916) 228-7733		http://www.riversidebuildersinc.com/	Fall 2017
DES	Sierra College DES Department	Rocklin	(916) 660-7300		https://academics.sierracollege.edu/drafting-and-engineering-support	Spring 2020
DES	Tons Per Hour	Auburn	(916) 663-3800	it@tonspershour.com	https://www.tonsperhour.com/	Fall 2018
DES	Two Rivers Architects	Folsom	(916) 358-7555	info@tworiversaia.com	https://www.tworiversaia.com/	Summer 2016
DES	US Pipe Fabrication Marysville	Olivehurst	(530) 742-5171		https://www.uspipe.com/u-s-pipe-fabrication	Spring 2018
DES	Verde Creations	Granite Bay	(916) 791-4356		https://verdedesign.com/	Fall 2016
DES	Wilson Design Studio	Folsom	(916) 524-5614	info@wdsia.com	https://www.wdsia.com/	Summer 2018
IT	Department of General Services	West Sacramento	(916) 376-5000		https://www.dgs.ca.gov/	Spring 2018
IT	Eternity Key	Roseville	(916) 932-8366	sales@eternitykey.com	https://eternitykey.com/	Summer 2018
IT	K-Love/ Air One	Rocklin	(916) 781-0657	info@kloveair1.com	http://www.klove.com/	Summer 2017
IT	Sierra College Hacker Lab	Rocklin	(916) 514-7044	contact@hackerlab.org	https://academics.sierracollege.edu/hacker-lab	Summer 2016
IT	Sierra College IT Department	Rocklin	(916) 660-7300		https://academics.sierracollege.edu/information-technology	Spring 2020
MECH	Infinadeck	Rocklin	(916) 645-3870		https://infinadeck.com/	Summer 2019
MECH	LSM Racing Products	Rocklin	(916) 632-2692	sales@lsmproducts.com	http://lsmproducts.com/	Summer 2018
WELD	Knisley Welding	Loomis	(916) 652-5891	sales@knisleyexhaust.com	https://knisleyexhaust.com/	Spring 2019
WELD	McLellan Blacksmithing	Loomis	(916) 652-5790	john@mclellanblacksmithing.com	https://mclellanblacksmithing.com/	Fall 2017
WELD	Metal Cloak	Rancho Cordova	(916) 631-8071		https://metalcloak.com/	Fall 2017
WELD	Ruff Stuff Specialties	Loomis	(916) 600-1945	info@RuffStuffSpecialties.com	https://www.ruffstuffspecialties.com/catalog/	Spring 2017
WELD	Sierra College Welding Department	Rocklin	(916) 660-8000		https://academics.sierracollege.edu/welding-technology	Fall 2019
WELD	Siemens Mobility	Sacramento	(916) 681-3000		https://new.siemens.com/us/en/company/siemens-in-the-usa/sacr	Fall 2019

BUSINESS AND INNOVATION



BUSINESS AND INNOVATION



BUSINESS

ECONOMICS

RECREATION MANAGEMENT

BUSINESS AND INNOVATION RECOMMENDED INTERNSHIP SITES

Program	Site Name	City	Phone	Email	Website	Most Recent Participating Semester
BUS	Beyond Appearance Salon and Spa	Marysville	(530) 822-6369			Spring 2018
BUS	Blue Line Arts	Roseville	(916) 783-4117	info@bluelinearts.org	https://www.bluelinearts.org/	Summer 2017
BUS	Breaking Phoenix	Roseville	(916) 626-0721		https://www.breakingphoenix.com/	Summer 2018
BUS	California Family Fitness Corporate Office	Orangevale	(916) 987-2030		https://www.californiafamilyfitness.com/	Spring 2018
BUS	CalTrans	Sacramento	(916) 654-2852		https://dot.ca.gov/	Spring 2019
BUS	Crimmigration Inc.	Sacramento	(916) 877-5577	law@crimmigrationinc.com	http://www.crimmigrationinc.com/	Summer 2018
BUS	Crocker Art Museum	Sacramento	(916) 808-7000	cam@crockerart.org	https://www.crockerart.org/	Spring 2017
BUS	Digital Marketing Labs	Sacramento	(916) 822-2033		https://digitalmarketinglabs.com/	Spring 2018
BUS	Entercom	Sacramento	(916) 334-7777	sales@entercom.com	https://entercom.com/markets/sacramento/	Spring 2017
BUS	Foothill Firearms	Newcastle	(916) 663-9349	Kevin@foothillfirearms.net	https://www.foothillfirearms.net/	Summer 2016
BUS	Frank Rimerman + Co. LLP	Roseville				Spring 2020
BUS	Gold Country Wildlife Rescue	Auburn	(530) 885-0862	contact@goldcountrywildliferescue.org	https://goldcountrywildliferescue.org/	Spring 2019
BUS	Grace House	Carmichael	(916) 470-0408		https://thewaytribe.com/grace-house/	Fall 2017
BUS	Hand Crafted Structures	Truckee	(530) 412-0259	Allanmarshall412@icloud.com	http://www.handcraftedstructures.com/	Fall 2017
BUS	Incline Veterinary Hospital	Incline Village	(775) 831-0433	info@inclinevet.com	https://www.inclinevet.com/	Fall 2018
BUS	McLaughlin Studios	Loomis	(916) 652-6377	mclaughlinstudiosmusic@gmail.com	http://www.mclaughlinstudios.com/	Summer 2019
BUS	Merlot Marketing	Sacramento	(916) 285-9835	hello@merlotmarketing.com	https://www.merlotmarketing.com/	Summer 2017
BUS	MINX Salon and Spa	Loomis	(916) 259-1515		https://www.minxsalonspa.com/	Fall 2019
BUS	Nelson Bookkeeping Service	Foresthill	(530) 852-0761		http://www.nelsonbookkeeping.info/	Fall 2016
BUS	Optimum Strategies Inc.	Rocklin	(916) 626-6866	info@optimumstrategiesinc.com	https://optimumstrategiesinc.com/	Spring 2019
BUS	Project Oversight Corporation	Sacramento	(916) 716-8559		https://projectoversight.com/	Fall 2017
BUS	Quarry Park Adventures	Rocklin	(916)824-1680		https://quarrypark.com/	Spring 2020
BUS	Remax Performance	Grass Valley	(530) 477-0711		https://www.remax.com/realestateofficerealtor/grassvalley-ca-95949-remaxperformance-id60041200.html	Spring 2017
BUS	RSI	Sacramento	(916) 371-0793	rsidispach@rsiclimate.com	https://rsiclimate.com/	Summer 2016
BUS	Rudiger Foundation	Nevada City		president@rufk9.org	http://www.rufk9.org/?fbclid=IwAR0ai9E8k2f35_pmXdzWAH6fo3DIFj3HJ3pGx3ASF2XGiAaC6yCg5xeDx98	Fall 2019

Program	Site Name	City	Phone	Email	Website	Most Recent Participating Semester
BUS	Salon Rouge	Roseville	(916) 783-4247		https://www.salonrougeroseville.com/	Fall 2016
BUS	Save Mart	Truckee	(530) 587-5522		https://www.savemart.com/	Fall 2017
BUS	Sierra Insurance Associates Inc.	Truckee	(530) 550-0123	admin@sierrainsurance.com	https://www.sierrainsurance.com/	Spring 2017
BUS	Smog Busters	Roseville	(916) 773-7664		https://www.thesmogbusters.com/	Spring 2019
BUS	Soda Springs General Store	Soda Springs	(530) 426-3080		http://sodaspringsgeneralstore.com/	Fall 2016
BUS	SWEP	Tahoe	(530) 583-1430	missy@4swep.org	https://4swep.org/	Fall 2017
BUS	tCheck	Rocklin		support@tcheck.me	https://tcheck.me/	Fall 2018
BUS	The Bridal Box	Fair Oaks	(916) 742-4638		http://www.thebridalbox.net/	Summer 2016
BUS	The Office Boss	Truckee	(530) 587-1620	Admin@TheOfficeBOSS.com	https://theofficeboss.com/P1223/TheOfficeBossInc	Fall 2016
BUS	Trusted American Insurance Agency (TAIA)	Rocklin	(844) 998-7878	info@taia.us	https://taia.us/	Fall 2019
BUS	USGS IT Office	Sacramento	1 (888) 275-8747		https://www.usgs.gov/	Summer 2018
BUS	VITA/ Placer Co. HHS	Rocklin	(916) 784-6000	humanservices@placer.ca.gov	https://www.placer.ca.gov/2096/Human-Services	Spring 2018
BUS	Wellspace Health	Sacramento	(916) 469-4690	volunteers@wellspacehealth.org	https://www.wellspacehealth.org/	Spring 2018
RECM	Auburn Recreation District	Auburn	(530) 885-8461	info@auburnrec.com	http://www.auburnrec.com/index.php	Spring 2020
RECM	Fair Oaks Recreation and Parks District	Fair Oaks	(916) 966-1036		https://forpd.org/	Spring 2019
RECM	Folsom Sports Complex	Folsom	(916) 461-6650		https://www.folsom.ca.us/	Spring 2017
RECM	Hyatt Regency Lake Tahoe Resort	Incline Village	(775) 832-1234	resvtvllt@hyatt.com	https://www.hyatt.com/en-US/hotel/nevada/hyatt-regency-lake-tahoe-resort-spa-and-casino/tvllt	Summer 2018
RECM	Jenn Robirds Events	Roseville	(626) 841-3758	info@jennrobirdsevents.com	https://www.jennrobirdsevents.com/	Summer 2018
RECM	Placer Land Trust	Auburn	(530) 887-9222	info@placerlandtrust.org	https://www.placerlandtrust.org/	Fall 2017
RECM	Placer Nature Center	Auburn	(530) 878-6053	dmatthews@placernaturecenter.org	http://placernaturecenter.org/	Fall 2018
RECM	Prairie City SVRA	Rancho Cordova	(916) 324-4442	ohvinfo.ohv@parks.ca.gov	http://ohv.parks.ca.gov/?page_id=1221	Spring 2017
RECM	Roseville Courtyard Marriott	Roseville	(916) 772-5555		https://www.marriott.com/hotels/travel/sacrvc-courtyard-roseville/	Spring 2018
RECM	Roseville Parks and Recreation	Roseville	(916) 774-5319	parkandrec@roseville.ca.us	https://www.roseville.ca.us/government/departments/parks	Fall 2018
RECM	Roseville Travel	Roseville	(916) 782-6363		https://rosevilletravel.com/	Fall 2017
RECM	Sierra College ASSC	Rocklin	(916) 660-7380		https://www.sierracollege.edu/student-services/campus-life/assc.php	Spring 2018
RECM	Sierra College Athletics Department	Rocklin	(916) 660-8104		http://athletics.sierracollege.edu/landing/index	Spring 2018
RECM	Sunrise Recreation and Parks District	Citrus Heights	(916) 725-1585		https://www.sunriseparks.com/	Summer 2019

EARTH AND ENVIRONMENT



EARTH AND ENVIRONMENT



AGRICULTURE

EARTH SCIENCE

ENVIRONMENTAL STUDIES AND SUSTAINABILITY

GEOGRAPHY

NATURAL SCIENCE

EARTH AND ENVIRONMENT RECOMMENDED INTERNSHIP SITES

Program	Site Name	City	Phone	Email	Website	Most Recent Participating Semester
AGRI	Chapman Family Farm	Nevada City				Fall 2019
AGRI	Dueling Dogs Brewing	Lincoln	(916) 434-8141		http://www.duelingdogsbrewing.com/	Summer 2019
AGRI	Eisley Nursery Inc.	Auburn	(530) 885-5163		https://www.eisleynursery.com/	Fall 2019
AGRI	Foothill Roots Farm	Meadow Vista	(530) 637-8704	info@foothillrootsfarm.com	https://foothillrootsfarm.com/	Summer 2019
AGRI	Lake Wildwood Association	Penn Valley	(530) 432-1152	info@lwwa.org	https://www.lwwa.org/	Spring 2020
AGRI	Orangevale Parks and Recreation	Orangevale	(916) 988-4373	info@ovparks.com	https://www.ovparks.com/	Spring 2018
AGRI	Plum Possum Farm	Lincoln		plumpossumfarm@gmail.com	https://plumpossumfarm.com/	Summer 2019
AGRI	Roseville Urban Forest Foundation	Roseville	(916) 250-2902	info@rosevilletree.org	https://rosevilletree.org/	Spring 2020
AGRI	Sierra Oaks Vet Services	Grass Valley	(530) 432-8443		https://sierraoksvet.com/	Summer 2018
AGRI	Van Dyke's Rice Dryer	Pleasant Grove	(916) 655-3171			Spring 2018
ESCI	Inyo County Water Department	Independence	(760) 878-0007	lpiper@inyocounty.us	https://www.inyowater.org/	Summer 2016
ESS	Dry Creek Conservancy	Rocklin	(916) 773-6575		https://drycreekconservancy.org/	Fall 2018
ESS	Friends of Auburn Ravine	Lincoln	(916) 672-9672	projects@auburnravine.org	https://auburnravine.org/	Spring 2019
ESS	Gold Country Wildlife	Auburn	(530) 885-0862	contact@goldcountrywildliferescue.org	https://goldcountrywildliferescue.org/home-property/	Summer 2019
ESS	Sierra Streams Institute	Nevada City	(530) 477-7132	info@sierrastreamsinstitute.org	https://sierrastreamsinstitute.org/	Summer 2018
GEOG	City of Citrus Heights	Citus Heights	(916) 725-2448		https://www.citrusheights.net/	Spring 2018
GEOG	Department of Fish and Wildlife	Sacramento	(916) 445-0411		https://www.wildlife.ca.gov/	Spring 2019
GEOG	HELIX Environmental	Folsom	(916) 365-8700		http://www.helixepi.com/	Fall 2019
GEOG	Under the Trees Kevin Whitlock	Nevada City	(530) 274-7390			Spring 2019
GEOG	U.S. Forest Service	Nevada City	(800) 832-1355		https://www.fs.fed.us/	Spring 2018
GEOG	US Forest Service, Tahoe National Forest	Truckee			https://www.fs.usda.gov/	Spring 2020

EDUCATION



EDUCATION



EDUCATION

HUMAN DEVELOPMENT AND FAMILY

LANGUAGE AND LITERATURE



LANGUAGE AND LITERATURE



DEAF STUDIES

ENGLISH

SPANISH

WORLD LANGUAGES

PEOPLE, CULTURE AND SOCIETY



PEOPLE, CULTURE AND SOCIETY



ANTHROPOLOGY

ART HISTORY

COMMUNICATION STUDIES

HISTORY

HUMANITIES

LGBT STUDIES

LIBERAL ARTS

PHILOSOPHY

POLITICAL SCIENCE

PSYCHOLOGY

SOCIAL SCIENCE

SOCIOLOGY

WOMEN AND GENDER STUDIES

PUBLIC SAFETY, HEALTH AND WELLNESS



PUBLIC SAFETY, HEALTH AND WELLNESS



ADMINISTRATION OF JUSTICE

ALLIED HEALTH

FIRE TECHNOLOGY

HEALTH EDUCATION

HEALTH SCIENCES

KINESIOLOGY

NURSING

NUTRITION AND FOOD SCIENCE

PUBLIC SAFETY, HEALTH AND WELLNESS RECOMMENDED INTERNSHIP SITES

Program	Site Name	City	Phone	Email	Website	Most Recent Participating Semester
ADMJ	Citrus Heights Police Department	Citrus Heights	(916) 725-2448		https://citrusheights.net/222/Police-Department	Fall 2018
ADMJ	*Grass Valley Police Department	Grass Valley	(530) 477-4600	comments@gvpd.net	http://www.cityofgrassvalley.com/departments/police	Spring 2020
ADMJ	Lincoln Police Department	Lincoln	(916) 645-4040		http://www.lincolnca.gov/city-hall/departments-divisions/police-department	Summer 2018
ADMJ	Placer County DA Victim/Witness Assistance	Roseville	(916) 543-8000		https://www.placer.ca.gov/3356/Victim-Witness-Assistance	Fall 2017
ADMJ	Placer County DA's Office	Roseville	(916) 543-8000		https://www.placer.ca.gov/2923/District-Attorney	Spring 2020
ADMJ	Placer County Sheriff	Auburn	(530) 889-7800		https://www.placer.ca.gov/1680/Sheriffs-Office	Spring 2017
ADMJ	*Rocklin Police Department	Rocklin	(916) 625-5000		https://www.rocklin.ca.us/police	Spring 2020
ADMJ	*Roseville Police Department	Roseville	(916) 774-5000		https://www.roseville.ca.us/government/departments/police_department	Spring 2020
ADMJ	Sacramento Probation Department	Sacramento	(916) 875-0273	ProbationMail@SacCounty.net	http://www.probation.saccounty.net/Pages/default.aspx	Fall 2018
FIRE	Diamod Springs Fire Department	Diamond Springs	(530) 626-3190		http://www.diamondfire.org/	Fall 2019
FIRE	Rough & Ready Fire Station	Rough & Ready	(530) 432-1140		http://rrvfd.com/	Fall 2019
FIRE	Sacramento Fire Reserves	McClellan Park		operations.sfdr@gmail.com	https://sacramentofirereserves.org/	Spring 2020
KIN	ETUM Organics	Elk Grove			https://www.etumorganics.co/	Summer 2019
KIN	Sierra College Athletics Department	Rocklin	(916) 660-8108		http://athletics.sierracollege.edu/landing/index	Spring 2019
KIN	Sierra College Kinesiology Department	Rocklin	(916) 660-8100		https://academics.sierracollege.edu/kinesiology	Spring 2020
KIN	South Yuba Club	Grass Valley	(530) 272-7676	mikec@southyubaclub.com	https://www.southyubaclub.com/	Spring 2019
NRSR	Retinal Consultants Medical Group	Roseville	(916) 774-0100	adminmailbox@retinalmd.com	https://retinalmd.com/	Summer 2018
NRSR	Sierra Nevada Children's Services	Grass Valley	(530) 272-8866		http://www.snccs.org/	Spring 2018
NUTF	Chapa-De Indian Health	Grass Valley	(530) 477-8545		https://chapa-de.org/	Spring 2018

*Contact Blair Spaulding at bspaulding@sierracollege.edu for information and an application for the Police Services Aide Program with this agency.

SCIENCE, TECHNOLOGY, ENGINEERING AND MATH



SCIENCE, TECHNOLOGY, ENGINEERING AND MATH



ASTRONOMY

BIOLOGICAL SCIENCES

CHEMISTRY

COMPUTER SCIENCE

ENGINEERING

MATHEMATICS

PHYSICS

VISUAL AND PERFORMING ARTS



VISUAL AND PERFORMING ARTS



APPLIED ART AND DESIGN

ART

FASHION

MUSIC

PHOTOGRAPHY

THEATRE ARTS

VISUAL AND PERFORMING ARTS RECOMMENDED INTERNSHIP SITES

Program	Site Name	City	Phone	Email	Website	Most Recent Participating Semester
AAD	Blue Line Arts	Roseville	(916) 783-4117	info@bluelinearts.org	https://www.bluelinearts.org/	Summer 2017
AAD	Breaking Phoenix	Roseville	(916) 626-0721		https://www.breakingphoenix.com/	Fall 2018
AAD	City of Roseville	Roseville	(916) 774-5475		https://www.roseville.ca.us/	Summer 2017
AAD	City of Roseville Fire Station 1	Roseville	(916) 774-5800	fire@roseville.ca.us	https://www.roseville.ca.us/government/departments/fire_department/fire_station_locations/station_no_1	Summer 2016
AAD	Empire Mine State Historic Park	Grass Valley	(530) 273-8522		https://www.parks.ca.gov/?page_id=499	Spring 2018
AAD	Entercom	Sacramento	(916) 334-7777		https://entercom.com/	Spring 2017
AAD	Faculty Association of California Community Colleges (FACCC)	Sacramento	(916) 447-8555	info@facc.org	http://www.facc.org/	Spring 2020
AAD	KVMR	Nevada City	(530) 265-9073		https://www.kvmr.org/	Summer 2018
AAD	Placer County	Auburn	(530) 889-4000		https://www.placer.ca.gov/	Summer 2017
AAD	PrettySmartVAServices.com	Folsom	(916) 439-2180	info@prettysmartvaservices.com	https://prettysmartvaservices.com/	Spring 2019
AAD	Ruff Stuff Specialties	Loomis	(916) 600-1945	info@RuffStuffSpecialties.com	https://www.ruffstuffspecialties.com/catalog/	Summer 2016
AAD	Sierra College AAD Department	Rocklin	(916) 660-8000		https://academics.sierracollege.edu/applied-art-and-design	Spring 2017
AAD	Sierra College Marketing Department	Rocklin	(916) 660-7272	publicinformation@sierracollege.edu	https://www.sierracollege.edu/directory/groups/student-services/marketing-pr/index.php	Spring 2019
AAD	Spectrum Archives	Rocklin	(916) 715-2247	jterry@sierracollege.edu	https://www.sierracollege.edu/about-us/public-relations/news/blog-pages/2017/112017-spectrum-archives.php	Spring 2017
FASH	Kate Spade	Roseville	(916) 774-1150		https://www.katespade.com/	Summer 2018
FASH	Threads Clothing Exchange	Roseville	(916) 771-3222		https://www.threadsclotingexchange.com/	Summer 2016
FASH	Vali's Alterations	Rocklin	(916) 625-9359			Spring 2018
MUS	McLaughlin Studios	Loomis	(916) 652-6377	mclaughlintheatrecompany@gmail.com	http://www.mclaughlinstudios.com/	Spring 2018
PHOT	City of Roseville	Roseville	(916) 774-5475		https://www.roseville.ca.us/	Summer 2017
PHOT	City of Rocklin	Rocklin	(916) 625-5000		https://www.rocklin.ca.us/	Fall 2019
PHOT	Gold Country Images	Lincoln	(916) 409-5921	steverhubbard@gmail.com	https://www.goldcountryimages.com/	Spring 2017
PHOT	K. Walker Photography	Orangevale	(916) 989-3190	kwalkerphotography@gmail.com		Summer 2017
PHOT	Sierra College AAD & PHOTO Department	Rocklin	(916) 660-8072	rsnook@sierracollege.edu	https://www.sierracollege.edu/directory/groups/academics/liberal-arts/photography/index.php	Spring 2017
PHOT	Three Lilies Photography	Grass Valley	(530) 802-5171	threeliliesphotography@gmail.com	https://www.threeliliesphotography.com/	Fall 2019
THEA	McLaughlin Theatre Company	Loomis	(916) 652-6377	mclaughlintheatrecompany@gmail.com	http://www.mclaughlinstudios.com/	Fall 2016

Program	Site Name	City	Phone	Email	Website	Most Recent Participating Semester
THEA	Sierra College Dietrich Theatre	Rocklin	(916) 660-8000		https://www.sierracollege.edu/planning-governance/administrative-services/facilities/theater.php	Fall 2019