

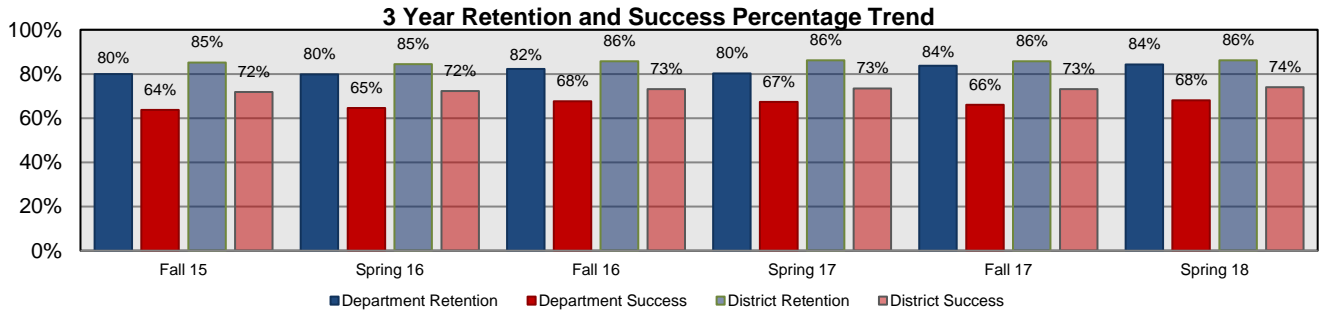
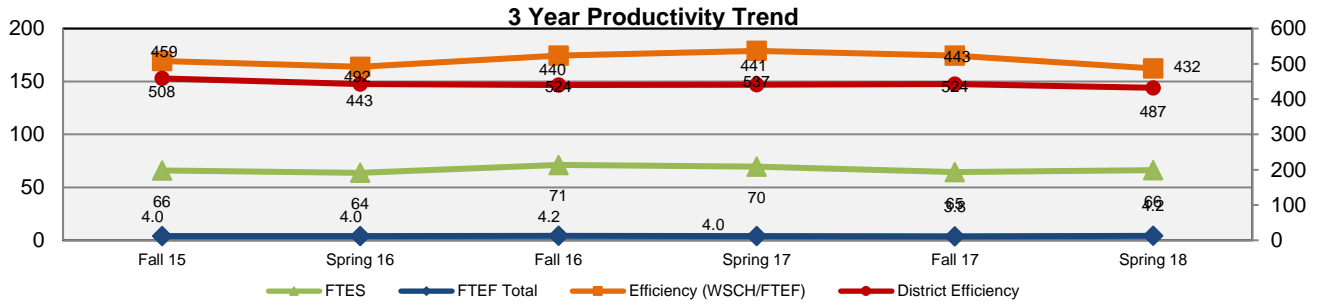
POLS	Fall 15	Spring 16	Fall 16	Spring 17	Fall 17	Spring 18	3 Yr Avg
FTES	66	64	71	70	65	66	67
FTEF Total	4.0	4.0	4.2	4.0	3.8	4.2	4.0
Efficiency (WSCH/FTEF)	508	492	524	537	524	487	511.9
Fill Rate	78.7%	80.5%	87.0%	88.0%	85.0%	81.0%	83.4%
AveSize	30.6	31.2	33.1	34.3	28.7	27.9	31.0
# of Sections	21	20	21	20	16	13	19
Department Retention	80%	80%	82%	80%	84%	84%	82%
Department Success	64%	65%	68%	67%	66%	68%	66%
Online Retention	82%	68%	81%	70%	75%	77%	75%
Online Success	66%	58%	73%	60%	65%	65%	65%

(28, 95,450 and 800 Courses)

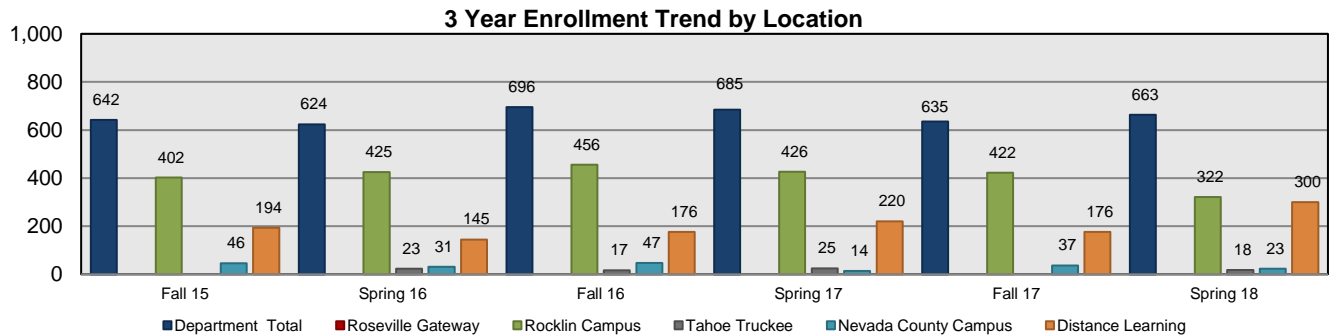
0

0

0.00



Enrollment by Location	Fall 15	Spring 16	Fall 16	Spring 17	Fall 17	Spring 18	3 Yr Avg
Department Total	642	624	696	685	635	663	658
Roseville Gateway							#DIV/0!
Rocklin Campus	402	425	456	426	422	322	409
Tahoe Truckee		23	17	25		18	21
Nevada County Campus	46	31	47	14	37	23	33
Distance Learning	194	145	176	220	176	300	202



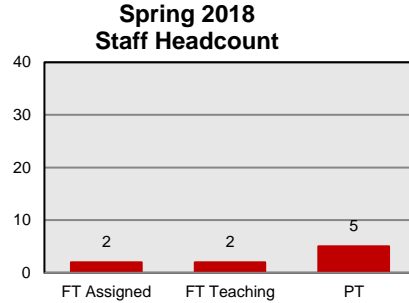
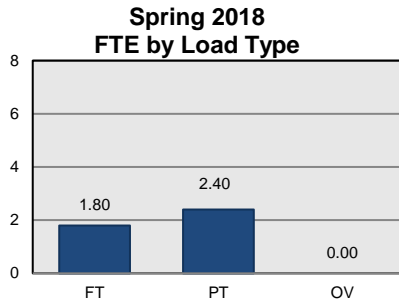
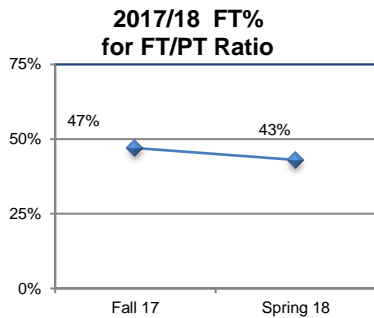
District Information	Fall 15	Spring 16	Fall 16	Spring 17	Fall 17	Spring 18	3 Yr Avg
District Enrollment	54,133	52,752	52,884	50,350	52,980	49,784	52,147
District Retention	85%	85%	86%	86%	86%	86%	86%
District Success	72%	72%	73%	73%	73%	74%	73%
District Efficiency	459	443	440	441	443	432	443
District Fill Rate	92.1%	89.4%	89.0%	88.0%	88.0%	85.0%	88.6%

**Political Science**

**Liberal Arts**

Instructional FTEF by Load Type	Fall 15	Spring 16	Fall 16	Spring 17	Fall 17	Spring 18	3 Yr Avg
FT	2.00	2.00	2.00	2.00	1.80	1.80	1.93
PT	2.00	2.00	2.22	2.02	2.00	2.40	2.11
OV	0.00	0.00			0.00	0.00	0.00
<b>Total FTEF</b>	<b>4.00</b>	<b>4.00</b>	<b>4.22</b>	<b>4.02</b>	<b>3.80</b>	<b>4.20</b>	<b>4.04</b>

FT/PT Ratio (FT%)	Fall 15	Spring 16	Fall 16	Spring 17	Fall 17	Spring 18	3 Yr Avg
Dept	50%	50%	47%	50%	47%	43%	48%
Rocklin	54%	54%	54%	50%	50%	40%	50%
NCC	0%	0%	0%	0%	0%	0%	0%
RC							#DIV/0!
TT		0%	0%	0%		0%	0%
DL	60%	75%	60%	67%	60%	56%	63%



Staff Headcount	Fall 15	Spring 16	Fall 16	Spring 17	Fall 17	Spring 18	3 Yr Avg
FT Assigned	2	2	2	2	2	2	2.00
FT Teaching	2	2	2	2	2	2	2.00
PT	5	5	5	4	5	5	4.83

Majors	Fall 15	Spring 16	Fall 16	Spring 17	Fall 17	Spring 18	3 Yr Avg
Political Science for Transfer	103	111	118	116	126	124	116.33
							#DIV/0!
							#DIV/0!
							#DIV/0!
							#DIV/0!

Awards	2015-16	2016-17	2017-18	3 Yr Avg
AA				#DIV/0!
AS				#DIV/0!
AA-T	9	8	9	8.67
AS-T				#DIV/0!
Certificate				#DIV/0!
<b>Total</b>	<b>9</b>	<b>8</b>	<b>9</b>	<b>8.67</b>

Course Outcomes	# of Active Courses	# Courses Assessed	# Active Learning Outcomes	Outcomes Assessed
	13	7	83	17
Program Outcomes	# of Program Outcomes	Outcomes Assessed		
<b>Curriculum Currency SP 16</b>				

Active Course = Taught during the previous 3 years  
 Active Learning Outcomes = Active Course outcomes  
 Course Assessed = Course assessed and SAA submitted during the previous 3 years  
 Outcomes Assessed = Outcomes assessed during the previous 3 yrs  
 Program Outcomes = Active Program Level Outcomes

Political Science

Liberal Arts

Retention/Success by Ethnicity	Fall 15		Spring 16		Fall 16		Spring 17		Fall 17		Spring 18		3 Yr Avg
	Enr.	%	Enr.	%	Enr.	%	Enr.	%	Enr.	%	Enr.	%	
African American Ret.		68%		78%		65%		66%		69%		57%	66%
African American Succ.	25	52%	27	37%	34	41%	32	50%	42	45%	49	33%	42%
Amer Indian/Alaskan Nat Ret.		67%		100%		100%		100%		86%		87%	89%
Amer Indian/Alaskan Nat Succ.	3	33%	1	100%	12	83%	5	80%	28	71%	23	78%	75%
Asian Ret.		82%		64%		82%		91%		82%		74%	80%
Asian Succ.	34	71%	36	53%	45	69%	43	79%	38	66%	34	65%	67%
Filipino Ret.		75%		100%		77%		90%		80%		60%	79%
Filipino Succ.	8	50%	4	75%	17	47%	19	79%	5	60%	10	50%	60%
Hispanic/Latino Ret.		74%		80%		81%		72%		78%		81%	77%
Hispanic/Latino Succ.	117	56%	108	61%	128	63%	137	57%	105	58%	113	64%	60%
Pacific Islander Ret.		100%		50%		100%		78%		80%		100%	85%
Pacific Islander Succ.	4	50%	2	50%	2	50%	9	44%	5	80%	5	80%	59%
Other/Multi-Ethnic Ret.		67%		100%		100%		100%		89%		89%	89%
Other/Multi-Ethnic Succ.	3	33%	5	80%	1	100%	2	100%	28	79%	28	82%	79%
Unknown/Declined Ret.		83%		100%		100%		70%		67%		100%	81%
Unknown/Declined Succ.	6	67%	4	75%	3	100%	10	40%	6	67%	2	50%	61%
White Ret.		82%		81%		84%		83%		83%		84%	83%
White Succ.	442	67%	437	68%	454	71%	428	71%	378	69%	399	71%	69%
Disparate Threshold (Succ.)		53%		54%		57%		57%		55%		57%	56%

Retention/Success by Equity Pop.	Fall 15		Spring 16		Fall 16		Spring 17		Fall 17		Spring 18		3 Yr Avg
	Enr.	%	Enr.	%	Enr.	%	Enr.	%	Enr.	%	Enr.	%	
Students with Disabilities Ret.		79%		72%		85%		86%		79%		88%	82%
Students with Disabilities Succ.	29	69%	29	48%	34	77%	22	64%	38	58%	57	72%	66%
Foster Youth Ret.		0%		100%		100%		67%		80%		91%	81%
Foster Youth Succ.	3	0%	7	71%	4	75%	6	33%	5	40%	11	73%	56%
Low Income Ret.*		79%		78%		82%		77%		81%		77%	79%
Low Income Succ.*	379	60%	372	62%	277	66%	246	63%	279	66%	363	65%	64%
Veteran Ret.		90%		79%		94%		85%		65%		79%	82%
Veteran Succ.	20	70%	24	54%	16	81%	27	67%	17	53%	24	58%	63%
Female Ret.		80%		79%		82%		79%		81%		80%	80%
Female Succ.	328	65%	324	66%	347	68%	348	66%	334	66%	351	65%	66%
Male Ret.		79%		81%		83%		82%		82%		82%	81%
Male Succ.	306	62%	292	64%	339	67%	324	69%	293	66%	301	70%	66%
Other/Non-Disclosed Gender Ret.		88%		88%		70%		69%		88%		70%	77%
Other/Non-Disclosed Gender Succ.	8	63%	8	38%	10	60%	13	54%	8	63%	10	50%	54%

